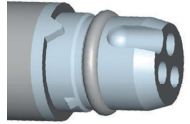
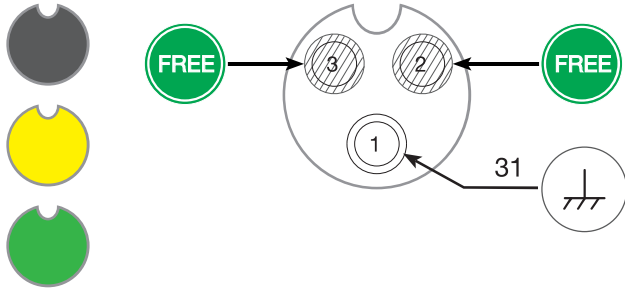


ASS3 3 pin female

ASS3
3 pin

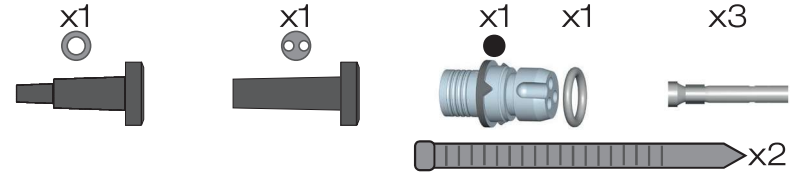


I_{max}=16A



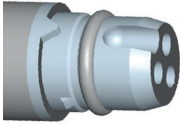
Mounting instruction ASS3 3 pin female

SPARE PART NO.: 13-0322-281



1. Plug the cable into the connector.
2. Push the connector onto the cable.
3. Insert the sleeve and plug.
4. Push the sleeve and plug onto the cable. Dimensions: 35mm and 5mm.
5. Tighten the nut and screws. A warning icon indicates to avoid overheating.

ASS3
3 pin



I_{max}=16A

