

# Produktinformation Product information

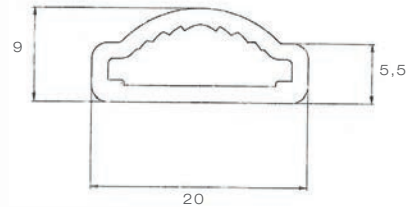
## TUBEPOINT STABLEUCHE TUBULAR LIGHT



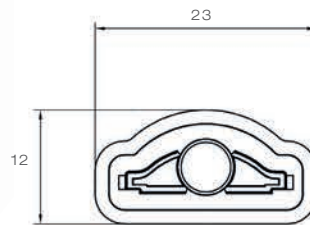
1.410 mm

960 mm

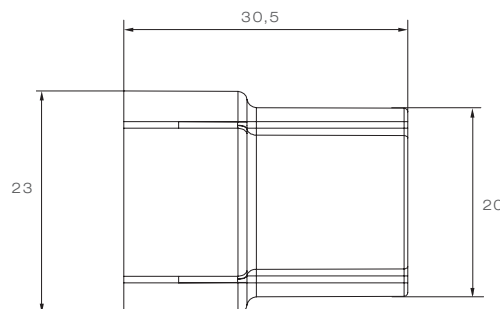
510 mm



Abmessung Lichtscheibe  
Dimension lens



Abmessung Endkappe  
Dimension endcap



### PRODUKTVORTEILE/NUTZEN

- schlankes Design
- gutes Preis / Leistungsverhältnis
- unterschiedliche Längen
- perfekte Lichtausbeute
- beliebig erweiterbar durch P&R / DC Verbinder
- nachträgliche Erweiterung jederzeit möglich
- einfache und unkomplizierte Installation

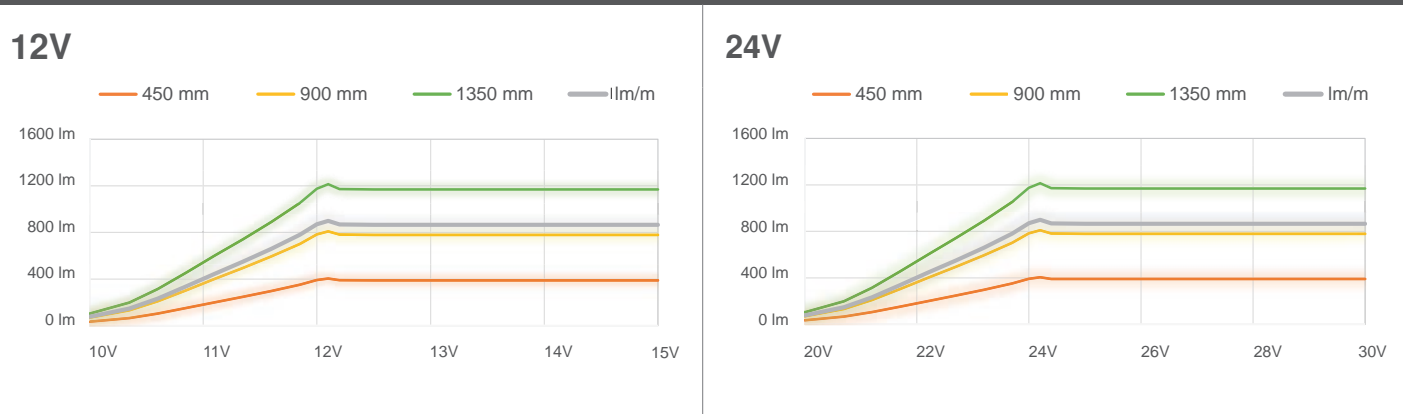
### PRODUCT BENEFITS

- slim design
- unique price-performance ratio
- various length
- perfect light-output
- optional extendable with P&R and DC connectors
- subsequent assembly
- simple installation

# TUBEPOINT

TECHNISCHE DATEN TECHNICAL FACTS			
	510 mm	960 mm	1.410 mm
LÄNGE DER LINSE: LENGTH OF LENS:	450 mm	900 mm	1.350 mm
NENNSPANNUNG: NOMINAL VOLTAGE:	12 V oder/or 24 V	12 V oder/or 24 V	12 V oder/or 24 V
LUMEN BEI NENNSPANNUNG: LUMEN AT NOMINAL VOLTAGE:	375 lm	750 lm	1125 lm
LEISTUNG: POWER:	4,5 W	9 W	13,5 W
ANSCHLUSS: CONNECTOR:	P&R oder/or DC	P&R oder/or DC	P&R oder/or DC
GEWICHT: WEIGHT:	0,1 kg	0,15 kg	0,2 kg
MATERIAL: MATERIAL:	PMMA		
TEMPERATURBEREICH: TEMPERATURE RANGE:	- 20°C~ + 50°C		
LICHTFARBE: LIGHT COLOUR:	5700 K		
IP-KLASSE: IP-RATING:	IP6K9K		
EMV-ABNAHME: EMC APPROVAL:	R10		

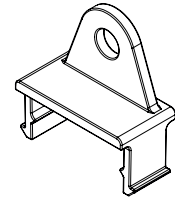
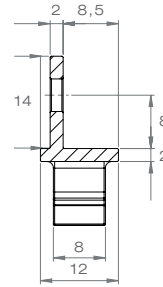
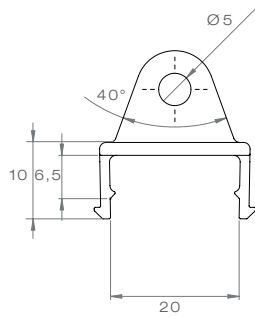
## LICHTSTROM IN ABHÄNGIGKEIT DER VERSORGUNGSSPANNUNG LUMINOUS FLUX DEPENDING ON POWER SUPPLY



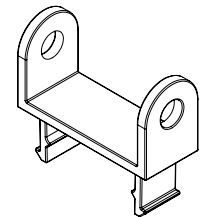
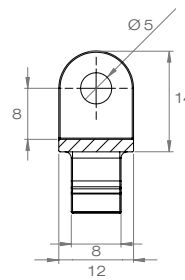
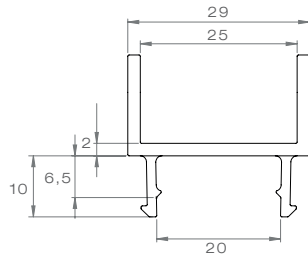
# TUBEPOINT

## HALTERUNGEN BRACKETS

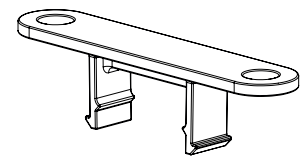
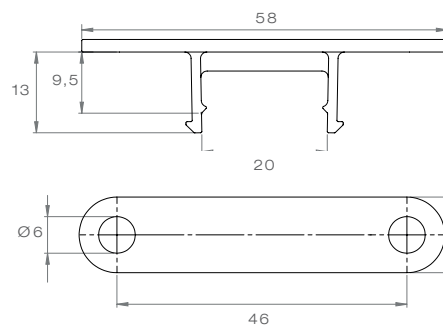
### PENDELHALTER: PENDULAR BRACKET:



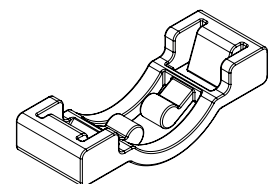
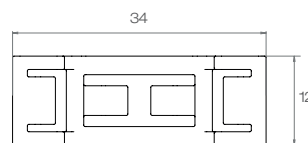
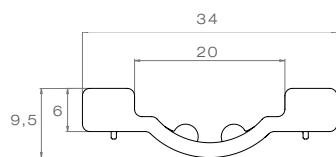
### HALTER FÜR PROFIL: PROFILE BRACKET:










### HALTER FÜR DIREKTANBAU: DIRECT MOUNTING BRACKET:



### VERSCHLUSSKAPPE: FIXATION CLIP FOR BRACKET:



# TUBEPOINT

BESCHREIBUNG / DESCRIPTION	OEM	AM
<b>Tubepoint 450 mm mit 0,1 m Kabellänge</b> <b>Tubepoint 450 mm with 0.1 m cable length</b>		
Tubepoint 450 mm, mit P&R Anschluss, 12V Tubepoint 450 mm, with P&R connector, 12V	21-8004-007	21-8004-001
Tubepoint 450 mm, mit P&R Anschluss, 24V Tubepoint 450 mm, with P&R connector, 24V	21-8004-017	21-8004-011
Tubepoint 450 mm, mit DC Anschluss, 12V Tubepoint 450 mm, with DC connector, 12V	21-8004-027	21-8004-021
<b>Tubepoint 900 mm mit 0,1 m Kabellänge</b> <b>Tubepoint 900 mm with 0.1 m cable length</b>		
Tubepoint 900 mm, mit P&R Anschluss, 12V Tubepoint 900 mm, with P&R connector, 12V	21-8004-037	21-8004-031
Tubepoint 900 mm, mit P&R Anschluss, 24V Tubepoint 900 mm, with P&R connector, 24V	21-8004-047	21-8004-041
Tubepoint 900 mm, mit DC Anschluss, 12V Tubepoint 900 mm, with DC connector, 12V	21-8004-057	21-8004-051
<b>Tubepoint 1350 mm mit 0,1 m Kabellänge</b> <b>Tubepoint 1350 mm with 0.1 m cable length</b>		
Tubepoint 1350 mm, mit P&R Anschluss, 12V Tubepoint 1350 mm, with P&R connector, 12V	21-8004-067	21-8004-061
Tubepoint 1350 mm, mit P&R Anschluss, 24V Tubepoint 1350 mm, with P&R connector, 24V	21-8004-077	21-8004-071
Tubepoint 1350 mm, mit DC Anschluss, 12V Tubepoint 1350 mm, with DC connector, 12V	21-8004-087	21-8004-081
<b>Halterungen</b> <b>Brackets</b>		
Pendelhalter pendular bracket		21-8007-107
Halter für Profil profile bracket		21-8007-117
Halter für Direktanbau direct mounting bracket		21-8007-127
Verschlusskappe fixation clip for bracket		21-8007-137
<b>Set: Halterungen</b> <b>Kit: brackets</b>		
5x Pendelhalter mit Verschlusskappe 5x pendular bracket with fixation clip		21-8007-144
5x Halter für Profil mit Verschlusskappe 5x profile bracket with fixation clip		21-8007-154
5x Halter für Direktanbau mit Verschlusskappe 5x direct mounting bracket with fixation clip		21-8007-164