

EcoFlow DELTA Pro

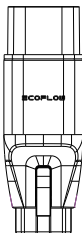
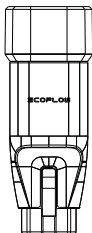
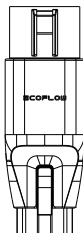
(EV X-Stream Adapter)



ECOFLOW

EcoFlow DELTA Pro EV X-Stream Adapter

Product illustration



J1772 (Type 1)
For U.S./Japan

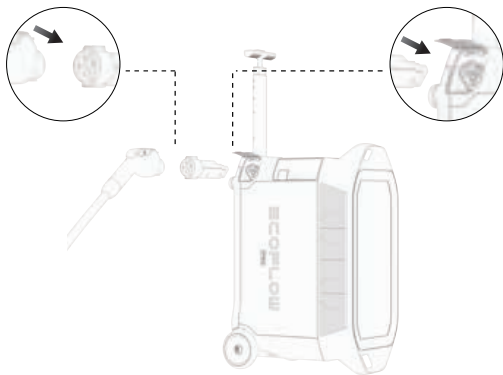
Mennekes (Type 2)
For the European
region

GB/T
For the Chinese
region

Product information

- Model number: EFD500-CC
- Output voltage: 100–240 V
50/60 Hz
- Maximum input/output
power: 3400 W max
- Input voltage: 100–240 V
50/60 Hz
- Operating temperature:
-10°C to 45°C

How to connect



Tip: Pay attention to aligning the connector locations when connecting.

Safety tips

- Make sure that the EV charger, DELTA Pro EV X-Stream Adapter and the Infinity Port are inserted into place before use;
- It is strictly forbidden to allow this product to come into contact with any liquid. Do not immerse this product in water or get it wet.

FCC STATEMENT

This device complies with Part 15 of the FCC Rules. Operation is subject to the following two conditions:

- (1) This device may not cause harmful interference, and
- (2) This device must accept any interference received, including interference that may cause undesired operation.

Warning:

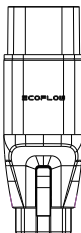
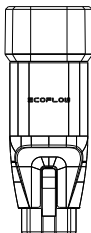
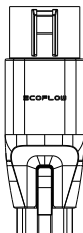
Changes or modifications not expressly approved by the party responsible for compliance could void the user's authority to operate the equipment.

NOTE:

This equipment has been tested and found to comply with the limits for a Class A digital device, pursuant to part 15 of the FCC Rules. These limits are designed to provide reasonable protection against harmful interference when the equipment is operated in a commercial environment. This equipment generates, uses, and can radiate radio frequency energy and, if not installed and used in accordance with the instruction manual, may cause harmful interference to radio communications. Operation of this equipment in a residential area is likely to cause harmful interference in which case the user will be required to correct the interference at his own expense.

EcoFlow DELTA Pro EV-Adapter

Produktabbildung



J1772 (Typ 1)
Für USA/Japan

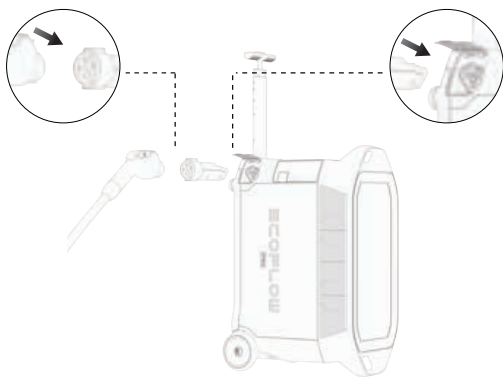
Mennekes (Typ 2)
Für Europa

GB/T
Für China

Produktinformationen

- Modellnummer: EFD500-CC
- Ausgangsspannung: 100-240 V
50/60 Hz
- Maximale Eingangs-/
Ausgangsleistung:
max. 3400 W
- Eingangsspannung: 100-240 V
50/60 Hz
- Betriebstemperatur:
-10°C-45°C

So stellen Sie eine Verbindung her



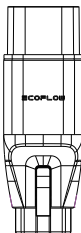
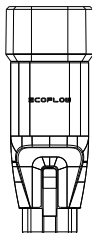
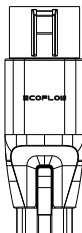
Extra-Tipp: Achten Sie darauf, die Steckerpositionen auszurichten, wenn Sie das Gerät verbinden.

Sicherheitshinweise

- Stellen Sie sicher, dass die Ladestation, der DELTA Pro EV-Adapter und der Infinity-Anschluss vor der Verwendung angeschlossen werden;
- Es ist strengstens verboten, dieses Produkt in Kontakt mit Flüssigkeiten zu bringen. Tauchen Sie dieses Produkt nicht in Wasser und lassen Sie es nicht nass werden.

Adaptateur EcoFlow DELTA Pro EV

Illustration du produit



J1772 (type 1)

Pour les États-Unis/
le Japon

Mennekes (type 2)

Pour la région
européenne

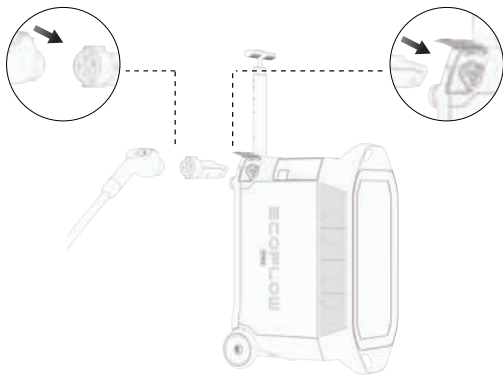
GB/T

Pour la région
chinoise

Informations sur le produit

- Numéro de modèle : EFD500-CC
- Tension de sortie : 100-240 V 50/60 Hz
- Puissance d'entrée/de sortie maximale : 3 400 W max
- Tension d'entrée : 100-240 V 50/60 Hz
- Température de fonctionnement : -10 °C à 45 °C

Comment procéder à la connexion



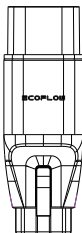
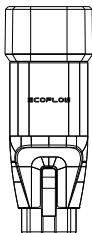
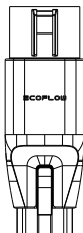
Conseil spécial : Veillez à aligner les emplacements des connecteurs lors du branchement.

Conseils de sécurité

- Assurez-vous que la station de charge, l'adaptateur DELTA Pro EV et le port Infinity sont bien en place avant utilisation ;
- Il est strictement interdit de laisser ce produit entrer en contact avec tout liquide. N'immergez pas ce produit dans l'eau et ne le mouillez pas.

Adattatore EV EcoFlow DELTA Pro

Illustrazione del prodotto



J1772 (tipo 1)

Mennekes (tipo 2)

GB/T

Per Stati Uniti/Giappone

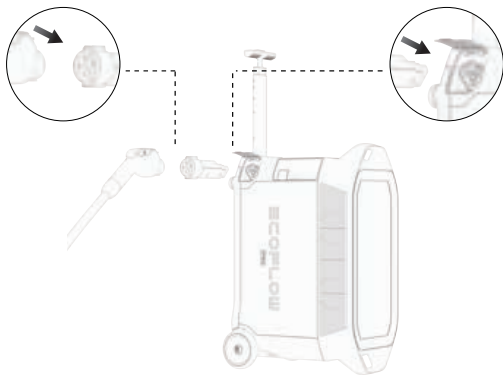
Per l'area europea

Per l'area cinese

Informazioni sul prodotto

- Numero modello: EFD500-CC
- Tensione di uscita: 100-240 V 50/60 Hz
- Potenza massima in ingresso/uscita: 3400 W max
- Tensione di ingresso: 100-240 V 50/60 Hz
- Temperatura di esercizio: Da -10 °C a 45 °C

Connessione



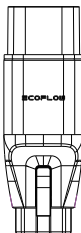
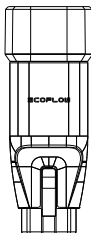
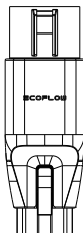
Suggerimento speciale: Prestare attenzione all'allineamento delle sedi dei connettori durante il collegamento.

Suggerimenti per la sicurezza

- Assicurarsi che la stazione di ricarica, l'adattatore DELTA Pro EV e la porta Infinity siano inseriti in posizione prima dell'utilizzo;
- Non lasciare in alcun modo che questo prodotto entri in contatto con liquidi. Non immergere questo prodotto in acqua né bagnarlo.

Adaptador EcoFlow DELTA Pro EV

Ilustración del producto



J1772 (tipo 1)

Mennekes (tipo 2)

GB/T

Para EE. UU./Japón

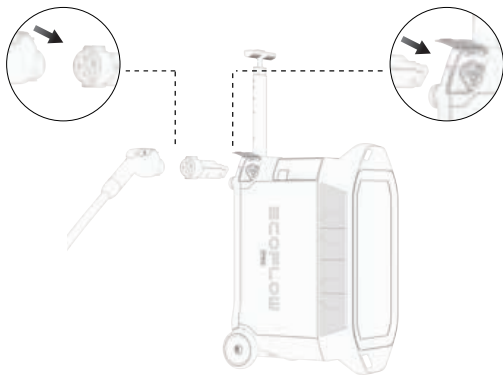
Para la región europea

Para la región de China

Información del producto

- Número de modelo: EFD500-CC
- Tensión de salida: 100-240 V 50/60 Hz
- Potencia máxima de entrada/salida: 3400 W máx.
- Tensión de entrada: 100-240 V 50/60 Hz
- Temperatura de funcionamiento: -10 °C a 45 °C

Conexión



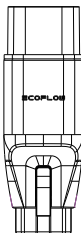
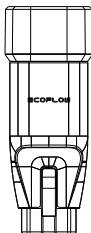
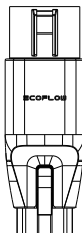
Sugerencia especial: Preste atención a la alineación de los conectores al realizar la conexión.

Consejos de seguridad

- Asegúrese de que la estación de carga, el adaptador DELTA Pro EV y el puerto Infinity están conectados correctamente antes de su uso.
- Está estrictamente prohibido que este producto entre en contacto con cualquier líquido. No sumerja el producto en agua ni lo moje.

EcoFlow DELTA Pro EV-adapter

Productafbeelding



J1772 (type 1)

Mennekes (type 2)

GB/T

Voor de VS/Japan

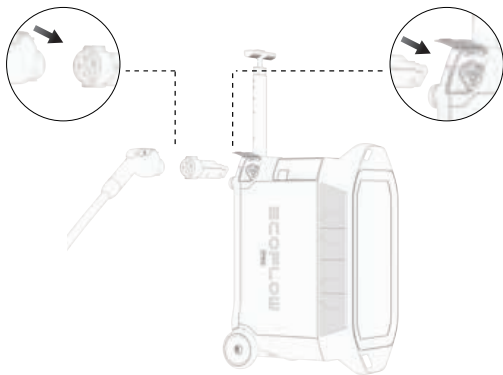
Voor de Europese regio

Voor de Chinese regio

Productinformatie

- Modelnummer: EFD500-CC
- Uitgangsspanning: 100-240 V
50/60 Hz
- Maximaal ingangs-/
uitgangsvermogen:
3400 W max
- Ingangsspanning: 100-240 V
50/60 Hz
- Bedrijfstemperatuur:
-10 °C tot 45 °C

Aansluiten



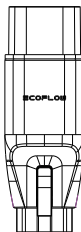
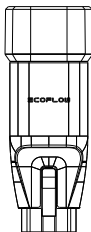
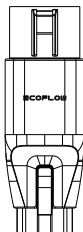
Speciale tip: Let er bij het aansluiten op dat u de connectorlocaties uitlijnt.

Veiligheidstips

- Zorg ervoor dat het laadstation, de DELTA Pro EV-adapter en de Infinity-poort correct zijn geplaatst voordat u ze gebruikt;
- Het is ten strengste verboden om dit product in contact te laten komen met vloeistoffen. Dompel dit product niet onder in water en laat het niet nat worden.

Адаптер EcoFlow DELTA Pro EV

Изображение устройства



J1772 (тип 1)
Для США/Японии

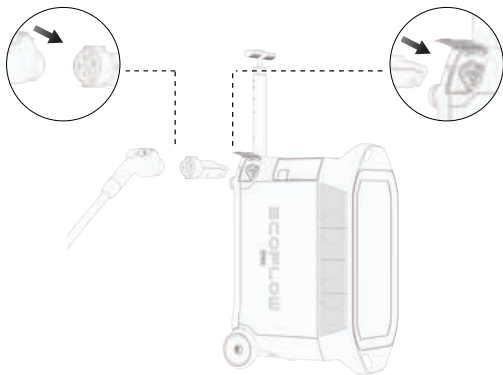
Mennekes (тип 2)
Для Европы

GB/T
Для Китая

Информация об устройстве

- Номер модели: EFD500-CC
- Выходное напряжение:
100–240 В 50/60 Гц
- Максимальная входная/
выходная мощность:
3400 Вт макс.
- Входное напряжение:
100–240 В 50/60 Гц
- Рабочая температура:
от -10 °С до +45 °С

Порядок подключения



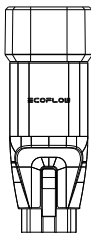
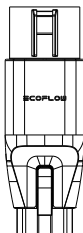
Особый совет: при подключении обращайте внимание на правильное расположение разъемов.

Советы по технике безопасности

- Перед использованием убедитесь, что зарядная станция, адаптер DELTA Pro EV и порт Infinity вставлены на место;
- Строго запрещается допускать контакт этого устройства с какой-либо жидкостью. Не погружайте это устройство в воду, не допускайте его намочания.

EcoFlow DELTA Pro EVアダプター

製品のイラスト



J1772 (タイプ1)
米国/日本向け

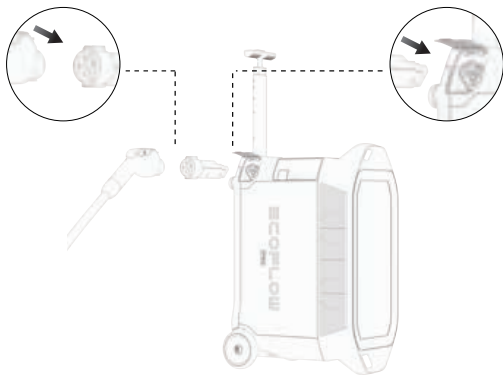
Mennekes (タイプ2)
欧州地域向け

GB/T
中国地域向け

スペック

- モデル番号：EFD500-CC
- 出力電圧：100～240 V
50/60 Hz
- 最大入力/出力：最大 3400 W
- 入力電圧：100～240 V
50/60 Hz
- 動作温度：-10℃～45℃

接続方法



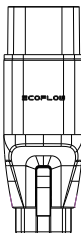
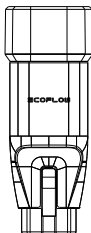
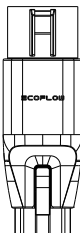
注意点：接続するときは、コネクタの位置を合わせるように注意してください。

安全に使用する為に

- 使用前に充電ステーション、DELTA Pro EVアダプター及びインフィニティーポートを所定の位置に挿入してください。
- 本製品をいかなる液体にも接触させないでください。本製品を水に浸したり濡らしたりしないでください。

EcoFlow DELTA Pro EV 어댑터

제품 일러스트



J1772(유형 1)
미국/일본용

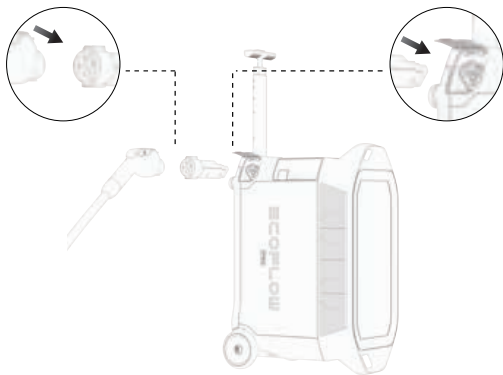
Mennekes(유형 2)
유럽용

GB/T
중국용

제품 정보

- 모델 번호: EFD500-CC
- 출력 전압: 100~240V 50/60Hz
- 최대 입력/출력 전력: 최대 3400W
- 입력 전압: 100~240V 50/60Hz
- 작동 온도: -10°C~45°C

연결 방법



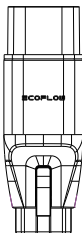
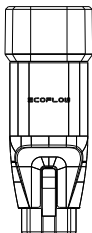
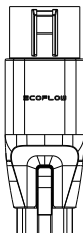
특별 팁: 연결 시 커넥터 위치를 정확히 맞추십시오.

안전 팁

- 사용 전에 충전 스테이션, DELTA Pro EV 어댑터, 인피니티 포트가 제자리에 삽입되었는지 확인하십시오.
- 제품에 절대로 액체가 닿지 않도록 하십시오. 제품을 물에 담그거나 젖게 하지 마십시오.

EcoFlow DELTA Pro 充电桩快充转接头

产品图示



J1772(Type 1)

适用于美国/日本

Mennekes(Type 2)

适用于欧洲地区

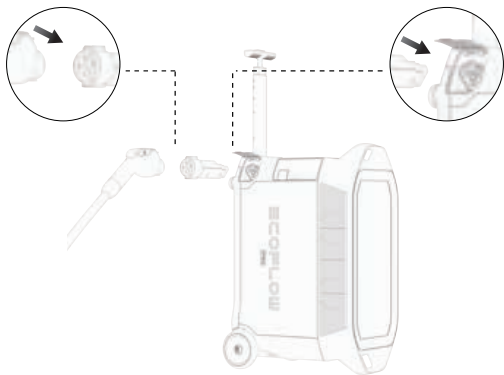
GB/T

适用于中国地区

产品信息

- 型号: EFD500-CC
- 输出电压: 220-240V~ 50Hz
- 最大输入/输出功率: 3400W Max
- 输入电压: 220-240V~ 50Hz
- 工作环境温度: -10°C ~ 45°C

连接方式



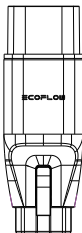
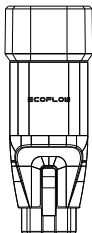
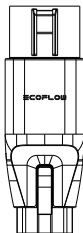
特别提示：连接时请注意对准卡扣位置。

安全提示

- 使用前请确保充电枪和充电桩快充转接头和无限端口卡扣插入到位；
- 严禁让本产品接触任何液体，请勿将本产品浸入水中或将其弄湿。

EcoFlow DELTA Pro 充電樁快充轉接頭

產品說明



J1772 (Type 1)

美國/日本

Mennekes (Type 2)

歐洲地區

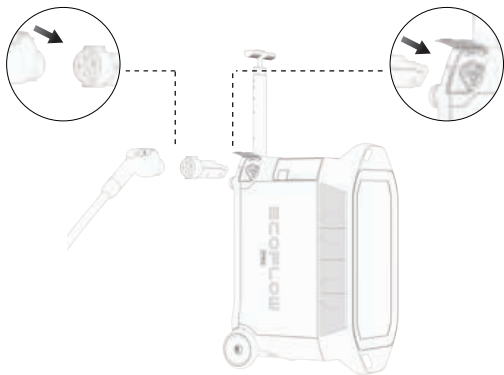
GB/T

中國地區

產品資料

- 型號：EFD500-CC
- 輸出電壓：100-240 V
50/60 Hz
- 最大輸入/輸出功率：
最大 3400 W
- 輸入電壓：100-240 V
50/60 Hz
- 操作溫度：-10°C 至 45°C

如何連接



特別貼士：連接時注意對齊連接器位置。

安全貼士

- 使用前請確保充電槍、充電樁快充轉接頭和無限插座卡扣插入到位。
- 嚴禁將本產品接觸任何液體。請勿將本產品浸入水中或弄濕。

ECOFLOW