

# PRODUCT DATA SHEET

## WSP

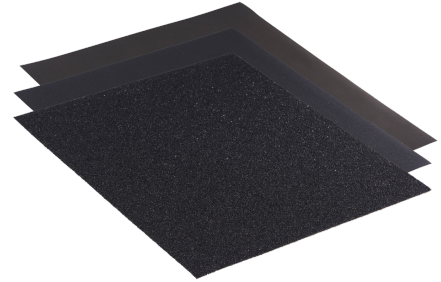
**PROLINE** ●●○

Backing type A/C-paper  
Grain type Silicon carbide  
Bond Synthetic resin

Shape BA 00 

- Closed coated silicon carbide for high material abrasion
- Fine grinding grit 2000
- Flexible paper underlay for optimal workpiece adaptation

Waterproof abrasive paper with silicon carbide on a paper backing.



Type designation	WSP
Article designation 1	Wet abrasive paper
Article no.	301018
GTIN	4011890026267
Content	50
Content unit	Piece
Weight	0,010 kg
Product dimensions	230 x 280
Diameter 1	230 mm
Total length	280 mm
Shape long version	Plain sheets without holes
Shape short version	Shape BA 00
Grain SU	1000
Felt hardness (D)/ flap thickness (H)	/
Backing type	A/C-paper
Grain type	Silicon carbide
Bond	Synthetic resin
Material suitability	Stainless steel Steel Paint, varnish, primer filler, body filler Composite materials
Industry suitability of the article	Anlagenbau Bauschlosserei Kessel- und Behälterbau Vehicle construction Konstruktionsstahlbau Foundry and dressing shop Rohrleitungsbau Containerbau
Product category number	PK06
Product category text	SU
GTIN barcode packing unit	4011890120439
Type of packaging	Carton
Package length	240 mm
Package width	290 mm
Package height	30 mm
Weight of packing unit	0,500 kg

Customs tariff number

68052000

Country of origin

FR

**RHODIUS Schleifwerkzeuge GmbH & Co. KG**

Brohltalstraße 2 · D-56659 Burgbrohl · [service@rhodius.de](mailto:service@rhodius.de) · [www.rhodius-abrasives.com](http://www.rhodius-abrasives.com)  
Tel. +49 2636 920-400 · kostenfreie Fax-Nr. (DE) +49 800 6645394

**RHODIUS**