

PRODUCT DATA SHEET

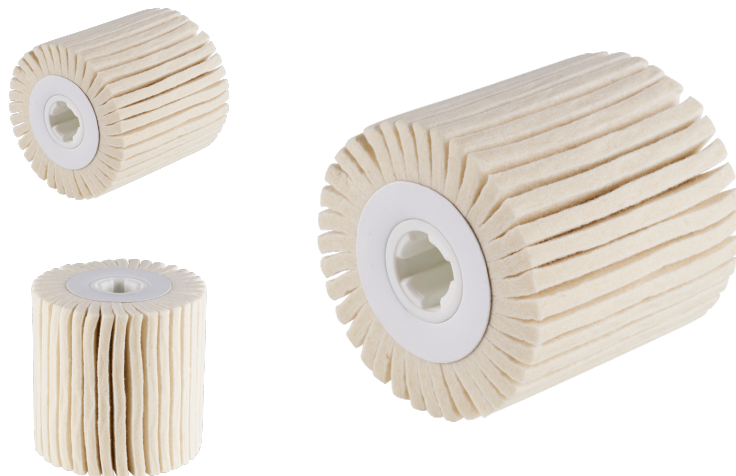
FW

TOPLINE ●●●

- High-quality wool felt
- Long lifetime through high-density fill
- FBW with slotted flaps for optimal workpiece adaptation

Felt flap drum, for use with satin finishing machines.

i Use felt flap drums with the corresponding polishing paste.



Type designation	FW
Article designation 1	Wool felt grinders
Article no.	305397
GTIN	4011890080559
Content	1
Content unit	Piece
Weight	0,310 kg
Product dimensions	100 x 100 x 19,00
Diameter 1	100 mm
Hole	19,00 mm
Width	100 mm
Flap thickness (D)	D5
Felt hardness (H)	H25
Felt hardness (D)/ flap thickness (H)	D5/H25
Maximum revolutions	3700 U/min
Optimum revolutions	1900 U/min
Material suitability	Stainless steel Steel Non-ferrous metals
Machine suitability	Satin finishing machine
Industry suitability of the article	Anlagenbau Bauschlosserei Kessel- und Behälterbau Vehicle construction Konstruktionsstahlbau Foundry and dressing shop Rohrleitungsbau Containerbau
Product category number	PK07
Product category text	PW
Type of packaging	Carton
Package length	120 mm
Package width	120 mm
Package height	120 mm
Weight of packing unit	0,310 kg
Customs tariff number	56022100

Country of origin

DE